

Metal-free 2, 3-port solenoid valve

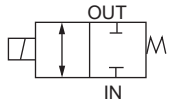
# MEB2/MEG2 Series

- NC, universal
- Working fluid: Water/pure water/chemical liquids
- Port size: Rc1/8

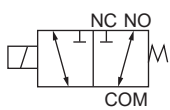


## JIS symbol

- MEB2 (2-port)  
: NC



- MEG2 (3-port)  
: Universal



## Specifications

Item	MEB2-6				MEG2-6				
Working fluid	Water/pure water/chemical liquids (fluids that do not corrode wetted part materials)								
Proof pressure MPa	0.3(water pressure)								
Working pressure MPa	Conditions	Fluid flow direction	Working pressure range of each port		Conditions	Fluid flow direction	Working pressure range of each port		
			IN	OUT			COM	NC	NO
	IN Positive pressure	IN→OUT	0 to 0.2	0 to 0.1	COM Positive pressure	COM→NO or NC	0 to 0.2	0 to 0.1	0 to 0.1
	OUT Positive pressure	OUT→IN	0 to 0.1	0 to 0.1	NC Positive pressure	NC→COM	0 to 0.1	0 to 0.1	0 to 0.1
	IN Negative pressure	OUT→IN	-0.05 to 0	-0.05 to 0	NO Positive pressure	NO→COM	0 to 0.1	0 to 0.1	0 to 0.1
					COM Negative pressure	NO or NC→COM	-0.05 to 0	-0.05 to 0	-0.05 to 0
Fluid temperature °C	0 to 60 (no freezing)								
Ambient temperature °C	0 to 50								
Atmosphere	No explosive or corrosive atmospheres								
Valve seat leakage cm <sup>3</sup> /min	0 (water pressure)								
Port size	Rc1/8								
Orifice size mm	3.0 or equiv.								
Cv	0.18								
Mounting orientation	Unrestricted								
Weight kg	0.22				0.24				
<b>Electrical specifications</b>									
Rated voltage	24 VDC/100 VAC (50/60Hz)								
Voltage fluctuation range	±10%								
Power consumption W	5.5								
Starting current A	1 or less								
Leakage current mA	24 VDC: 1 or less, 100 VAC: 6 or less (*1)								
Thermal class	Class 130 (B)								

\*1: The leakage current from the control circuit must be equal to or less than the values shown in the table.

\*2: As this product generates noise from incorporating electronic oscillator circuits, use noise countermeasures on the same power line.

\*3: After the solenoid valve is completely switched OFF, set an interval of 0.5 seconds or more before switching it ON the next time.

\*4: Make sure to read the safety precautions on pages 3 to 8 before use.

## How to order

**ME B 2 - 6 - DC24V**

**A** No. of Ports

**B** Orifice size

**C** Port size

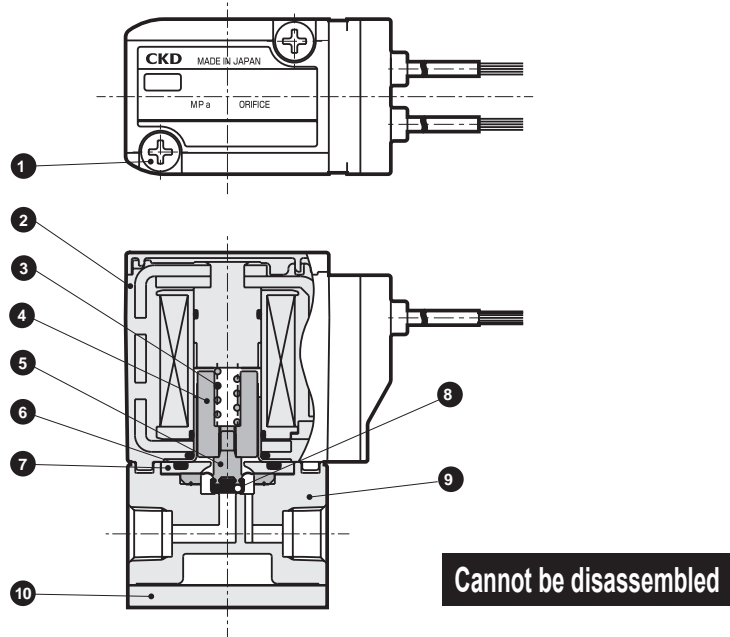
**D** Rated voltage

Code	Description
<b>A No. of Ports</b>	
<b>B</b>	2-port
<b>G</b>	3-port
<b>B Orifice size</b>	
<b>2</b>	ø3
<b>C Port size</b>	
<b>6</b>	Rc1/8
<b>D Rated voltage</b>	
<b>DC24V</b>	24 VDC
<b>AC100V</b>	100 VAC (50/60 Hz)

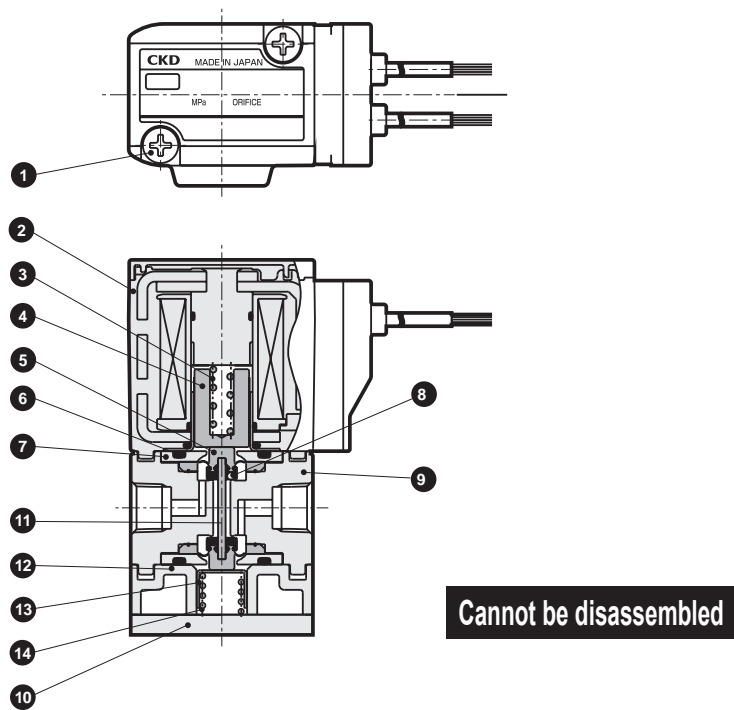
# MEB2/MEG2 Series

## Internal structure and parts list

### ● MEB2 (2-port valve)



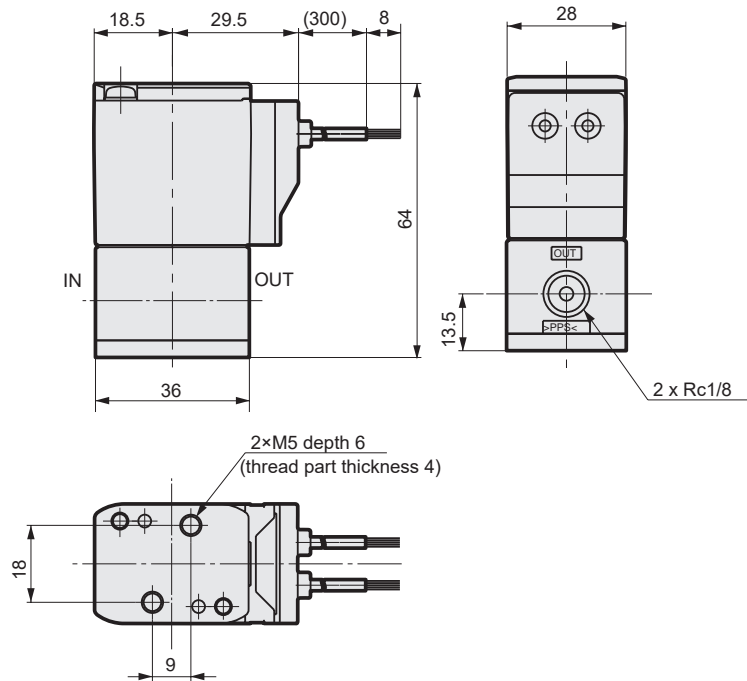
### ● MEG2 (3-port valve)



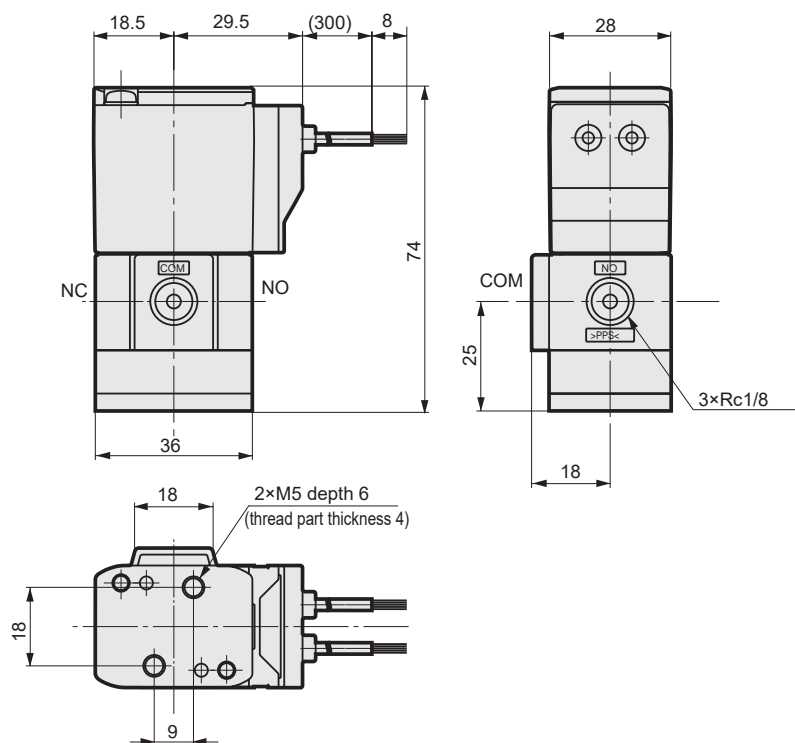
Part No.	Part name	Material	Part No.	Part name	Material
1	Cross-recessed pan head machine screw	SUSXM7	8	Valve seat	FFKM Perfluoroelastomer
2	Coil assembly	Class B molded coil	9	Body	PPS Polyphenylene sulfide
3	Spring	SUS304	10	Mounting plate	SUS304 Stainless steel
4	Plunger	SUS405 or equiv.	11	Rod	Ceramic
5	Diaphragm	PTFE	12	Base	PPS Polyphenylene sulfide
6	O-ring	FKM	13	Spring holder	SUS304 Stainless steel
7	Diaphragm adaptor	PPS	14	Spring	SUS304 Stainless steel

## Dimensions

● MEB2 (2-port valve)



● MEG2 (3-port valve)



\*When the mounting 2xM5 is 6 mm or more from the bottom of the mounting plate, the screws will fit into the body or base and may cause cracking. Make sure that the length of the fitting is 6 mm or less from the bottom of the mounting plate.